

Tailoring your feeds

Ana Nobre
ananobre@sparos.pt

Filipe Soares
Luis Conceição
Andreia Raposo
David Vicente



Carolina Castro
Rui Amaral



Angeliki Sagia
Eleftheria Bikou



Kostas Seferis



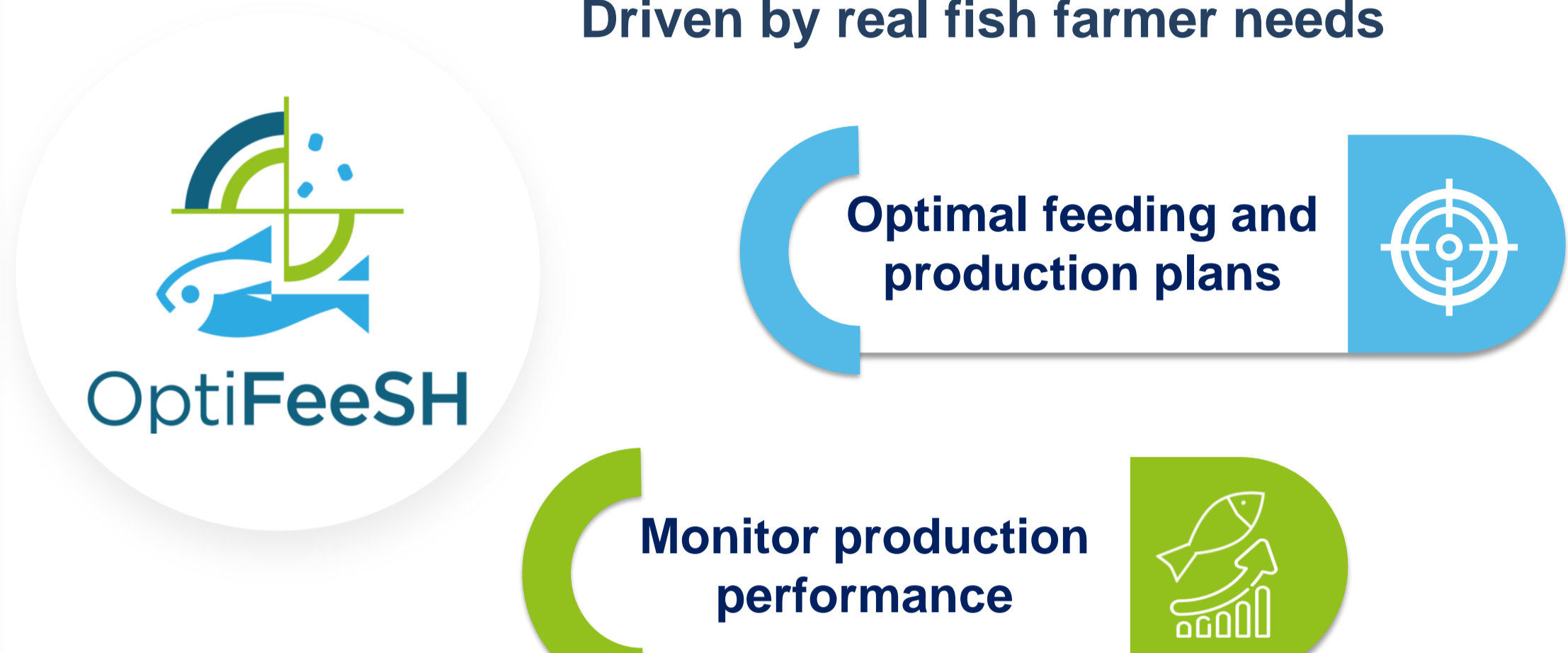
Acknowledgments:
This work is part of project E!2498 OptiFeeSH, supported by EUROSTARS-3 programme, and by Portugal and the European Union through ERDF, Algarve 2030, and COMPETE 2030, in the framework of Portugal 2030.



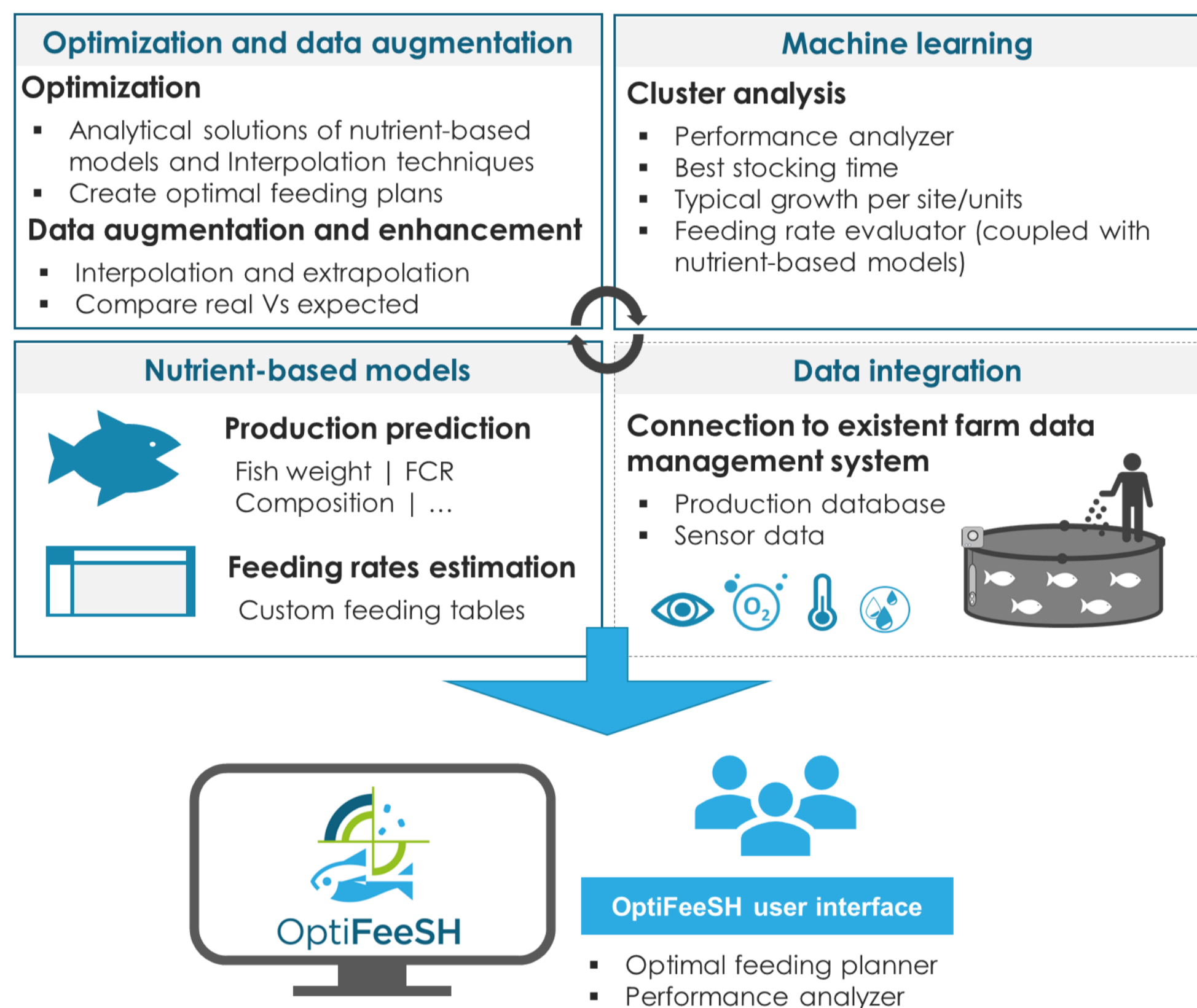
OptiFeeSH project for optimizing fish feeding and comprehensive performance analysis

OptiFeeSH OBJECTIVES

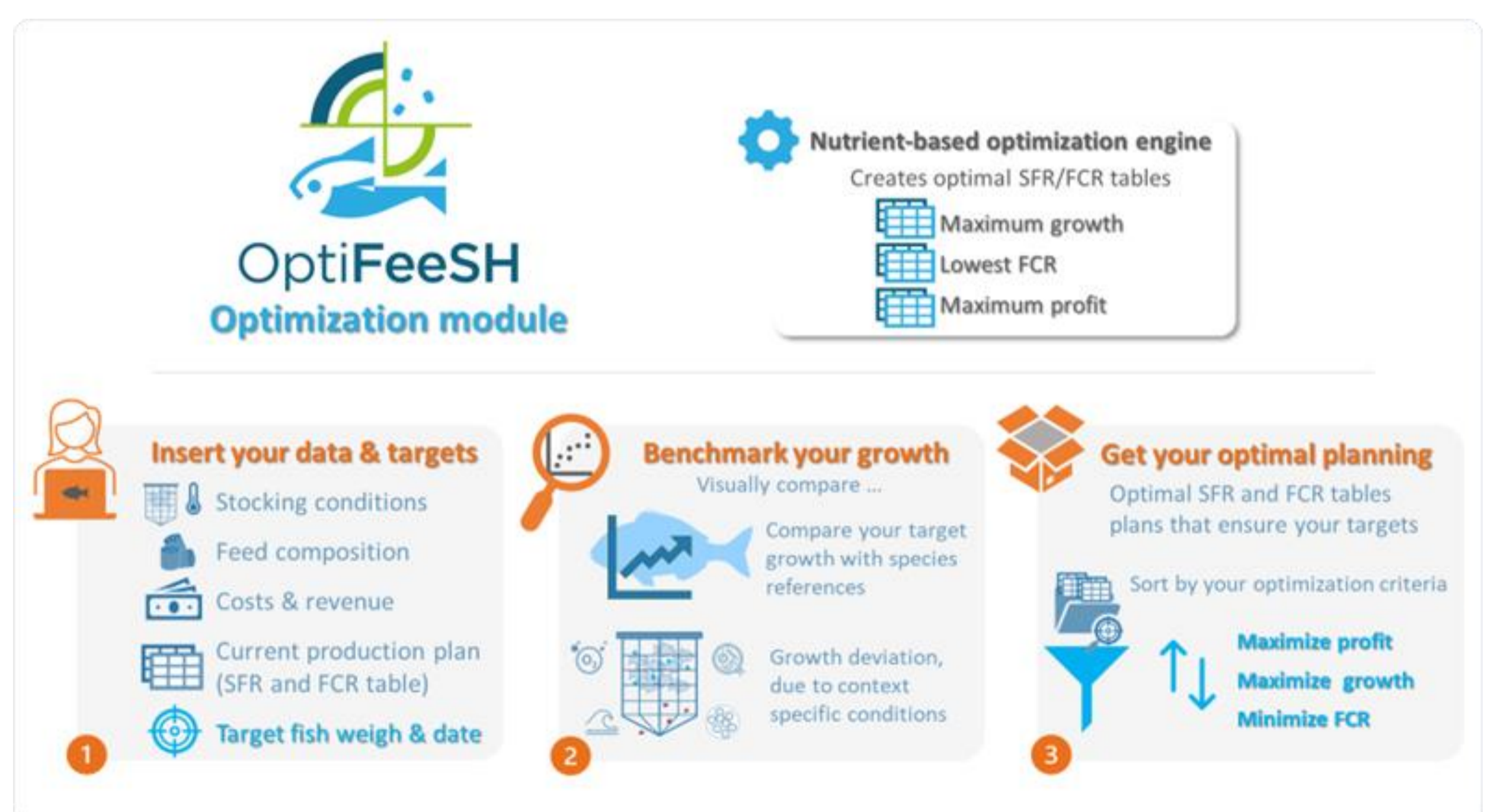
Driven by real fish farmer needs



OptiFeeSH concept



OptiFeeSH OPTIMIZATION module



(Optimal production plans are given as SFR and FCR tables)

We expect to help fish farming companies in improving the efficiency of their productions, namely to: (i) Increase profits, by maximizing growth while saving on feed; (ii) Improve water quality, by reducing feed waste; (iii) Adapt to the market, by optimizing harvesting plans.